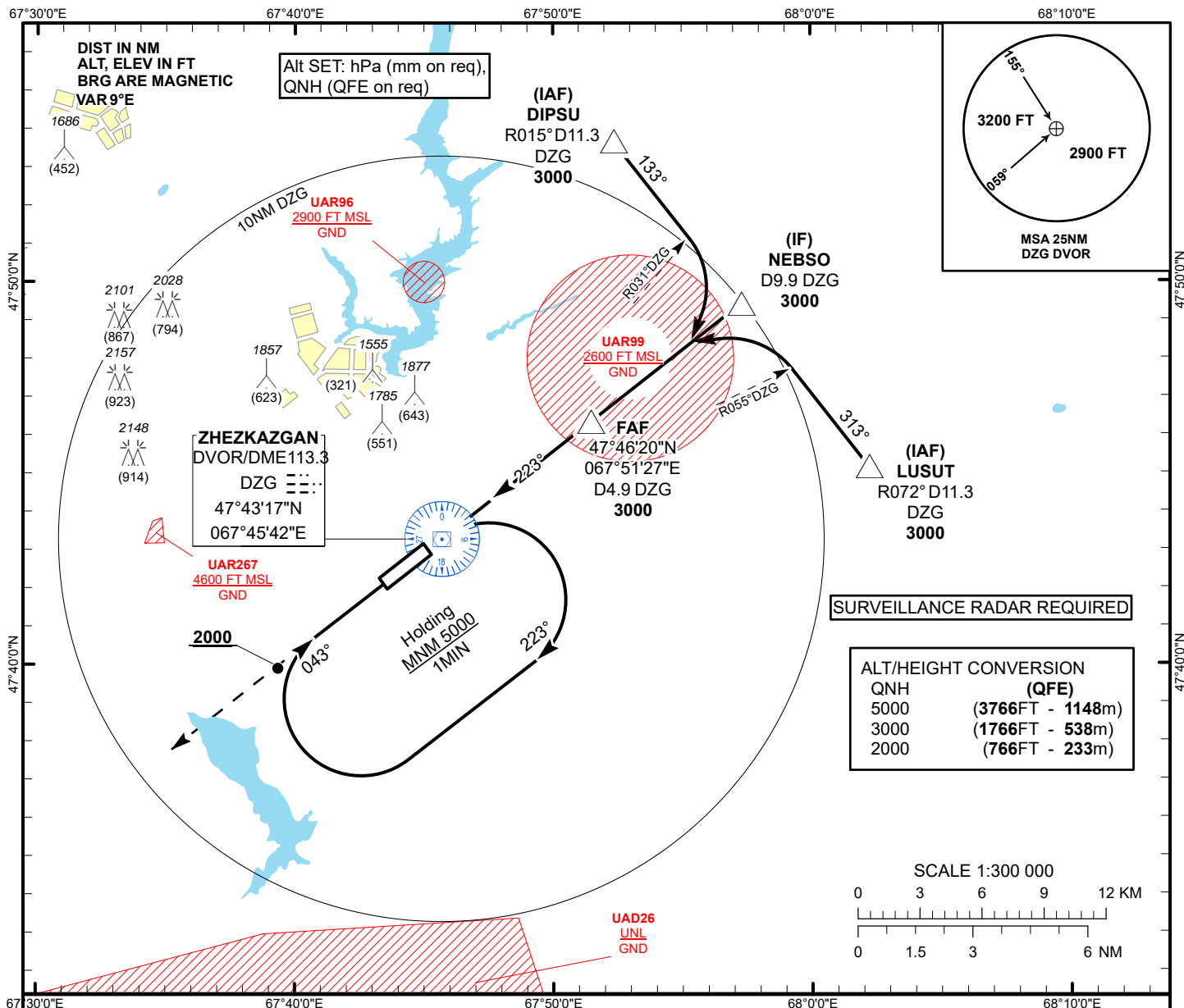


INSTRUMENT  
APPROACH  
CHART - ICAO

AERODROME ELEV **1251FT**  
HEIGHTS RELATED TO  
THR RWY 22 ELEV **1234FT**

ZHEZKAZGAN TOWER 127.1  
ZHEZKAZGAN ATIS (EN) 131.4  
ZHEZKAZGAN ATIS (RU) 122.4

ZHEZKAZGAN  
VOR/DME Y  
RWY 22

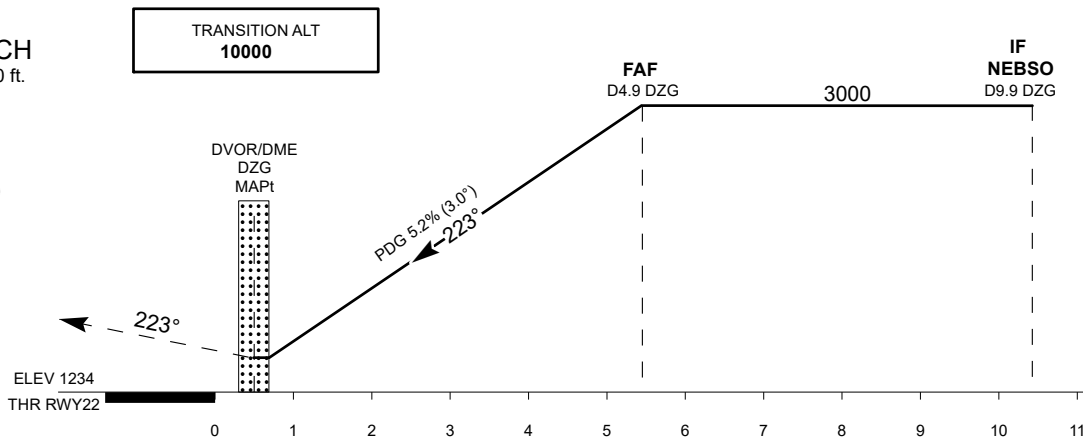


**MISSED APPROACH**

Climb on track 223° to 3000 ft.  
After passing 2000 ft radar  
vectoring will be provided.

**RADIO FAILURE**

In the case of RCF  
climb on track 223° to 3000  
outbound to 8.0 NM DZG.  
Turn left, climb to 5000  
to DZG and join  
to holding pattern.



Aircraft Category		A	B	C	D	DIST THR	5.4	5	4	3	2	1
Straight-in Approach OCA/H						DME DZG	4.9	4.5	3.5	2.5	1.5	0.5
	VOR/DME	1500(270)	1500(270)	1500(270)	1500(270)	ALTITUDE	3000	2875	2577	2238	1920	1601
						HEIGHT	1766	1641	1323	1004	686	367

Aerodrome Operating Minima (MDH ft x RVR(CMV))	VOR/DME					GS	Kt	80	100	120	140	160	180
						FAF-MAPt 4.9NM	min:sec	3:40	2:56	2:27	2:06	1:50	1:38
						Rate of descent (5.2%)	ft/min	420	530	640	740	850	960

ZHEZKAZGAN  
VOR/DME Y

AERONAUTICAL DATA TABULATION

VOR approach to RWY22 from DIPSU, NEBSO, LUSUT	
Fix/point	Coordinates
DVOR/DME DZG	47° 43' 17.1"N 067° 45' 41.7"E
(FAF) D4.9 DZG	47° 46' 20.1"N 067° 51' 27.1"E
NEBSO (IF) D9.9 DZG	47° 49' 25.3"N 067° 57' 17.2"E
DIPSU (IAF) R015°,D11.3 DZG	47° 53' 40.1"N 067° 52' 20.2"E
LUSUT (IAF) R072°,D11.3 DZG	47° 45' 10.2"N 068° 02' 13.4"E
THR RWY 22	47° 42' 58.68"N 067° 45' 07.14"E
Final approach descent angle is 3°	